

## Kaaterskill Clove Visitor Use Management Project Public Meeting #1 Synthesis

---

### Background

On May 10, 2023, an in-person public meeting was convened<sup>1</sup> under the New York State Department of Environmental Conservation (NYSDEC) Visitor Use Management (VUM) Project to address the following purposes:

- Provide foundational information to increase public understanding of the project goals and timeline, and build a shared understanding of how the Visitor Use Management (VUM) Framework will be applied in the Kaaterskill Clove area.
- Share perspectives about current and desired future conditions for the Kaaterskill Clove area regarding amounts and types of visitor use, the quality and character of visitor experiences, and public safety considerations.

The public meeting was structured into two distinct parts: Part 1 consisted of a welcome address and overview presentation, while Part 2 consisted of two rounds of facilitated small group discussions (see Appendix A for the meeting agenda, Appendix B for the meeting slide deck, and Appendix C for the discussion group materials). Meeting participants were encouraged to self-select one of four available small group discussion stations to participate in Part 2 of the public meeting. The public meeting closed with an opportunity for participants to share reflections on the evening's discussion, and provided an overview of next steps for the NYSDEC VUM Project. Approximately 79 individuals signed in as they entered the meeting room. A small number chose not to do so. Representatives from Ross Strategic, Otak, and NYSDEC were present at the meeting and served as facilitators during the two rounds of small group discussion.

### Part 1: Welcome and Overview

The meeting began with a welcome and meeting overview provided by expert facilitator Susan Hayman (Ross Strategic).<sup>2</sup> Next, McCrea Burnham (NYSDEC) provided background information and an overview of the NYSDEC VUM project for the Kaaterskill Falls project area. Finally, Abbie Larkin (Otak) provided an overview of the VUM Framework and an introduction to Otak's VUM expertise. Part 1 concluded with an open question and answer session facilitated by Susan Hayman. The following topics were raised by participants in the open question and answer session:

- Study outcomes in other areas where Otak has worked;
- The degree to which Otak's recommendations in other study areas were implemented by the respective land management agency (and within what time frame);
- The expected timeline for when NYSDEC would act on Otak's recommendations;
- Questions around the study area boundary, specifically why it doesn't include North-South Lake Campground and Day Use Area.

---

<sup>1</sup> The public meeting was convened at the Copper Tree Restaurant, Hunter Mountain Base Lodge, 64 Klein Avenue, Hunter NY, from 5:30 – 8:30 p.m.

<sup>2</sup> Ross Strategic is part of the broader consulting team led by Otak.

## Part 2/Round 1: Current Conditions

The first round of facilitated small group discussion focused on current conditions. Participants received a copy of the discussion group instructions with prompts (Appendix C), a comment card (Appendix C), and a set of numbered stickers to use to record their reactions to the prompts provided in the instructions. Each discussion group shared a printed large-scale map of the project area (Appendix C) to which participants added numbered stickers to identify the relative location on the map that corresponded to their numbered comments (i.e., to “place” the comment on the map). Facilitators described the exercise to their small group and primed participants’ thinking using the relevant prompts for Discussion Round 1: Current Conditions (see Appendix C). Participants were invited to share their comments with the small group while facilitators took notes on a flip chart. Facilitators collected all participant comment cards at the end of the round. The following themes, organized according to the discussion prompts, emerged during Discussion Round 1:

a) *What is working well in the project area that contributes to high quality visitor experiences?*

- **Natural beauty:** The area is inherently natural and beautiful with unique views.
- **Infrastructure:** Recent infrastructure improvements have enhanced visitor access. In particular, the viewing platform serves to introduce visitors to the area and the Falls, and is accessible to the average visitor. The viewing platform has improved the view, overall safety, and visitors’ ability to experience and enjoy the area. In addition, the Long Path and the Kaaterskill Rail Trail enhance the trail experience, adds value to the area, and increases trail connectivity.
- **Volunteer resources:** Catskill Steward and State Trail Steward volunteers are important greeters and sources of information for visitors, especially during peak season.
- **Education:** Mountain Top Historical Society and the Catskill Center are examples of valued sources of interpretive natural, cultural, and historic information about the area. Rangers also interact positively with visitors when they are available.

b) *What are current barriers to high quality visitor experiences, and for whom?*

- **Geography:** The area’s physical environment (e.g., steep slopes) limits management options and design solutions.
- **Conflicting values:** Not all visitors appear to respect the area, and too many participate in inappropriate uses and behaviors that result in conflicts among visitors and local residents.
- **Education and information:** The sense of place is lacking, in part due to a lack of an anchor point for visitors to receive information and a lack of a mechanism to reach visitors before they arrive onsite. Visitors arrive onsite unprepared and unequipped and may not be in the right place for their desired activities or experience. These issues often create safety concerns.
- **North-South Lake Campground and Day Use Area:** This area is connected to the project area, is part of the broader recreation system, and should be included in the project’s focus to identify solutions. This area is currently used to distribute use and extend parking and visitor access to the project area. Due to the level of infrastructure and visitor use at Kaaterskill Falls, the Falls area may be closer in character to the campground and day use area (classified as Intensive Use) than the current Wild Forest classification.

c) What are the *current positive impacts* of visitor use to the landscape and local communities?

- **Historic conditions:** The Clove and Falls area used to be more developed during the historic hotel era. Current use levels and impacts are less than historic levels, particularly with respect to infrastructure/development.
- **Viewing platform:** The platform improved the overall view and safety for visitors.
- **Economic impacts:** Visitation to Kaaterskill Falls and Clove has expanded local economies and translated to profits for some businesses (some business owners reported not seeing a positive economic impact).
- **Volunteer resources:** Local volunteer programs provide key information, direction, and greetings to visitors, particularly during peak season.

d) What are the *current negative impacts* of visitor use to the landscape and local communities?

- **Infrastructure:** The area may have too much infrastructure and feels more like a National Park experience to some. On the other hand, some called for more infrastructure that would promote safety in the Clove such as a walking path along the Clove, direct access to Fawn's Leap, and access to Bastion Falls. Others noted the rail trail is in disrepair and negatively impacting visitor use and recreation opportunities, and that facilities are undersized for current demand levels.
- **Accessibility:** The terrain of the area makes access difficult for those with mobility challenges. Wheelchair access from Laurel House parking lot to the viewing platform is experienced differently by different visitors, some report finding it greatly improved, while others find it to be a barrier.
- **Evidence of use:** Visitors leave behind garbage and other litter and graffiti and contribute to trail erosion and social trails by cutting shortcuts into the woods. Trees are sometimes carved or improperly cut. Sanitation issues including accessibility, overflowing bathrooms, and dog litter were also mentioned. While these issues occur throughout the project area, they were particularly noted at the Moore's Bridge location and along the creek bed that follows Route 23A.
- **Overcrowding:** Visitor use has become highly concentrated in time and space. Particularly during weekends and busy summer weeks, lines form on the trail to Kaaterskill Falls and to access the viewing platform which has a limited view from the front of the platform. Crowds of visitors and vehicles also occur along the roadway, at Fawn's Leap, and Moore's Bridge. Some expressed that they no longer visit due to the level of visitor use in the area. In an effort to distribute use, visitors are sometimes redirected to North-South Lake Campground and Day Use Area, which then experiences overuse.
- **Parking:** While there are numerous parking lots, parking options are not always the right size (e.g., Laurel House Road Parking Lot) or in the right location (e.g., no direct parking available at Fawn's Leap). When parking is unavailable, visitors will park in one location and walk to their desired location (e.g., park in Harding Lot to access destinations along 23A) which can result in roadway safety issues. Alternatively, visitors will stop in traffic to drop off their party and supplies, which can also result in roadway safety issues and block access for emergency vehicles. Poor signage and directions create confusion and often result in visitors

finding poor solutions to parking issues. The closure of Molly Smith’s parking lot was a disappointment to some, due not only to the loss of parking and access to the falls, but also due to its history and view of the Clove.

- **Community connections:** Visitors are not currently connected to local communities to find sources of information or other transportation solutions, despite the fact that local organizations and towns are actively managing visitor use in parking area and would benefit from staffing and infrastructure support. Local residents can feel displaced and disadvantaged by visitors and potential management strategies.
- **Safety:** Visitor use levels and behaviors have real safety concerns, such as vehicles that stop in traffic despite the tight curvature and low visibility on Route 23A, visitors that walk along the roadway, a general lack of parking management and control on Route 23A, and dangerous behavior at the Falls where the risk of slipping, falling, and loss of life are real. In addition, parking conditions can result in access issues for emergency response vehicles.
- **Law enforcement:** The area requires more rangers and DES staff presence in response to visitor use levels and behaviors. One permanent ranger is not enough to address the current issues, and will certainly be less than adequate to enforce future management decisions.
- **Promotion and marketing:** The area has been overpromoted, especially through social media, which is perceived to have exacerbated visitor use levels and unsafe behaviors.

Outside of the structured prompts used to facilitate small group discussions during Round 1, participants also expressed concern for the VUM project’s overall timeline, and the lack of immediate action and relief from the issues noted above. They encouraged prompt and certain implementation of project recommendations.

## Part 2/Round 2: Desired Future Conditions

The second round of facilitated small group discussion focused on desired future conditions. Participants used the same discussion group instructions with prompts (Appendix C) but were given a fresh comment card (Appendix C) and set of numbered stickers to record their reactions to the prompts in the instructions. Each discussion group shared the same printed large-scale map of the project area (Appendix C) to which participants added numbered stickers to identify the relative location on the map that corresponded to their numbered comments (i.e., to “place” the comment on the map). Facilitators described the exercise to their small group and primed participants’ thinking using the relevant prompts for Discussion Round 2: Desired Future Conditions (see Appendix C). Similar to Round 1, participants were invited to share their comments with the small group while facilitators took notes on a flip chart. Facilitators collected all participant comment cards at the end of the round. The following comments, organized according to the discussion prompts, emerged during Discussion Round 2:

### a) What would you like to experience when you visit this area?

- **Nature:** Beauty, tranquility, quietude, and oneness with nature; a refreshed spirit and sense of peace. These experiences are all accessible with minimal difficulty.
- **Wild character:** Historic value of an untrammelled landscape, and a sense of the “preserve” character instead of a “park” character.
- **Education and interpretation:** A focus on Leave-No-Trace principles and good signage (in multiple languages) that is inviting and encourages responsible use. Workshops available for

families and children that educate and promote a trash-free environment. Rangers present in sufficient amounts to support education and interpretation, in addition to law enforcement.

- **Management:** Limited and controlled flow of visitors to the Falls and in the Clove.

b) **How should people feel and what should they take away from their experiences in this area?**

- **Education and appreciation:** Visitors should feel educated and informed with a clear sense of expectations for their visit, and an understanding of and appreciation for visitors' impacts on natural systems and resources. Information should "fit" the landscape, such as variable message boards that blend with the scenic byways character. Visitors should feel they are welcomed, belong, and are part of the landscape (i.e., sense of place).
- **Safety:** Visitors should be prepared for their experience and should understand the potential consequences of their behavior. Visitors should also have opportunities for safe traffic flow and safe access, including road crossings, to various destinations such as the Falls, the Clove, the Long Path, Bastion Falls, and Fawn's Leap.

c) **What types of opportunities should the public have to experience this area?**

- **Opportunity spectrum:** Visitors should have a wide range of opportunities to experience the project area without discrimination. Recreation opportunities should also be dispersed, sustainable, and supported by walking paths and trails that span the project area and improve non-motorized circulation. Recreation opportunities are connected within the project area and connect to local communities through improved infrastructure.
- **Central information:** Information should be provided to help visitors understand the best location for their desired experience so that all visitors are welcome and accommodated in the project area. All information is centrally located at visitor centers and in nearby communities that serve as gateways and anchor points for visitors. In addition to information located onsite, information on the area is readily available online to enable visitors to arrive at the area informed and prepared. Information online and onsite can also increase visitors' awareness of the history and art movement inspired by the project area.
- **Optimized and connected access:** Transportation and parking solutions should optimize the available infrastructure, without necessarily adding to the available system. Transportation solutions should be easy to access, at low or no cost, and provide connections between visitors and villages that integrate trails, roadways, and parking. One example was using an electric train to connect old railroad lines to the hiking trail system.

d) **What benefits should people and local communities experience from recreation in this area?**

- **Appreciation:** All who experience the project area should gain an appreciation for the natural beauty, "forever wild" standing, and history of the area that they can share with others. This appreciation can ultimately result in resource protection and an improved sense of stewardship.
- **Cooperation:** Local communities benefit from the presence of visitors and cooperate with the State to manage and protect the public resource. Local residents are included in the management and future of the project area and expect to remain future users and stewards.

Outside of the structured prompts used to facilitate small group discussions during Round 2, participants also expressed support for:

- Implementing the recommendations developed by the Catskill Advisory Group
- Growing the Catskill, Trail, and DEC Steward programs;
- Increasing enforcement resources and actual enforcement;
- Decreasing advertising or promotion for the area, including through social media.

## Reflection

Following Discussion Round 2, participants were invited to share their reflections on the meeting structure and content. Participants expressed the following reflections:

- Appreciation for the meeting's small group discussion format;
- Acknowledgement that visitor use and management are not new topics of discussion, and that while some are tired of the discussion others see hope that this project will help;
- Emphasis of the "forever wild" nature of NYSDEC's forest preserve, and managing consistent with that designation;
- Recognition that North-South Lake Campground and Day Use Area is an important component of the recreation system and should not be excluded from the project area, which is currently focused on the Falls and Clove areas; the campground and day use area may be a more appropriate location for concentrated visitor use allowing the Falls to remain pristine;
- Expression of a sense of loss by some local residents attributed to increased visitation;
- Suggestion of the need for transportation solutions that take advantage of parking in/outside of town and a shuttle system that connects commercial venues and the project area;
- Recognition of the strain placed on law enforcement, the volunteer fire department, and local municipalities due to current visitation levels and patterns.

## Next Steps

The following summarizes next steps for the NYSDEC VUM Project:

- Public meeting presentation posted to the project website (see link below);
- Public meeting notes will be synthesized and shared with the public;
- Public meeting feedback and synthesis will be incorporated into future internal planning workshops, including development of a summer data collection plan;
- Onsite data collection will be implemented this summer in the project area.

Please visit the project website for future updates on the project: [www.kaaterskillclovevum.com](http://www.kaaterskillclovevum.com)

## Appendix A: Meeting Agenda

Kaaterskill Clove Visitor Use Management Public Meeting  
 Copper Tree Restaurant, Hunter Mountain Base Lodge<sup>1</sup>  
 64 Klein Avenue, Hunter NY  
 Wednesday, May 10, 2023 • 5:30-8:30 p.m. Eastern

CATSKILL PARK ▶ KAATERSKILL CLOVE  
**VISITOR USE MANAGEMENT**

### Meeting Purpose:

- Provide foundational information to increase public understanding of the project goals and timeline, and build a shared understanding of how the Visitor Use Management (VUM) Framework will be applied in the High Peaks area.
- Share perspectives about current and desired future conditions for the High Peaks area regarding amounts and types of visitor use, the quality and character of visitor experiences, and public safety considerations.

*Note: The meeting will incorporate interactive discussion, rather than a formal public comment approach.*

Time	Topic/Speakers
5:30 pm	Gathering— <i>Susan Hayman, Facilitator, Otak Team; McCrea Burnham, New York State Department of Environmental Conservation</i> <ul style="list-style-type: none"> <li>• Welcome and purpose for the meeting</li> <li>• Meeting overview, introductions</li> </ul>
5:45 pm	Foundational Information <ul style="list-style-type: none"> <li>• Project overview—<i>McCrea Burnham</i></li> <li>• Visitor use management framework overview—<i>Abbie Larkin, Otak</i></li> <li>• Q&amp;A</li> </ul>
6:30 pm	Break
6:45 pm	Public Perspectives— <i>Facilitated discussion regarding amounts and types of visitor use, the quality and character of visitor experiences, and public safety considerations</i> <ul style="list-style-type: none"> <li>• Round 1: Current conditions</li> <li>• Round 2: Desired future conditions</li> </ul>
8:10 pm	Reflections— <i>Facilitated Comments</i>
8:25 pm	Closing <ul style="list-style-type: none"> <li>• Next steps: Project timeline—<i>Susan Hayman</i></li> <li>• Closing remarks—<i>McCrea Burnham</i></li> </ul>
8:30 pm	Adjourn

Thank you for attending tonight's meeting!  
 Questions about the public process? Please email [yum-facilitators@rossstrategic.com](mailto:vum-facilitators@rossstrategic.com)  
 or visit the project website at <https://www.kaaterskillclovevum.com/>

<sup>1</sup> *The main entrance for this meeting space is under a maroon awning that says "Copper Tree Restaurant" on the right side of the Main Base Lodge. There are stairs and an elevator that can be accessed from that entrance that will lead to the meeting room.*

## Appendix B: Meeting Slide Deck

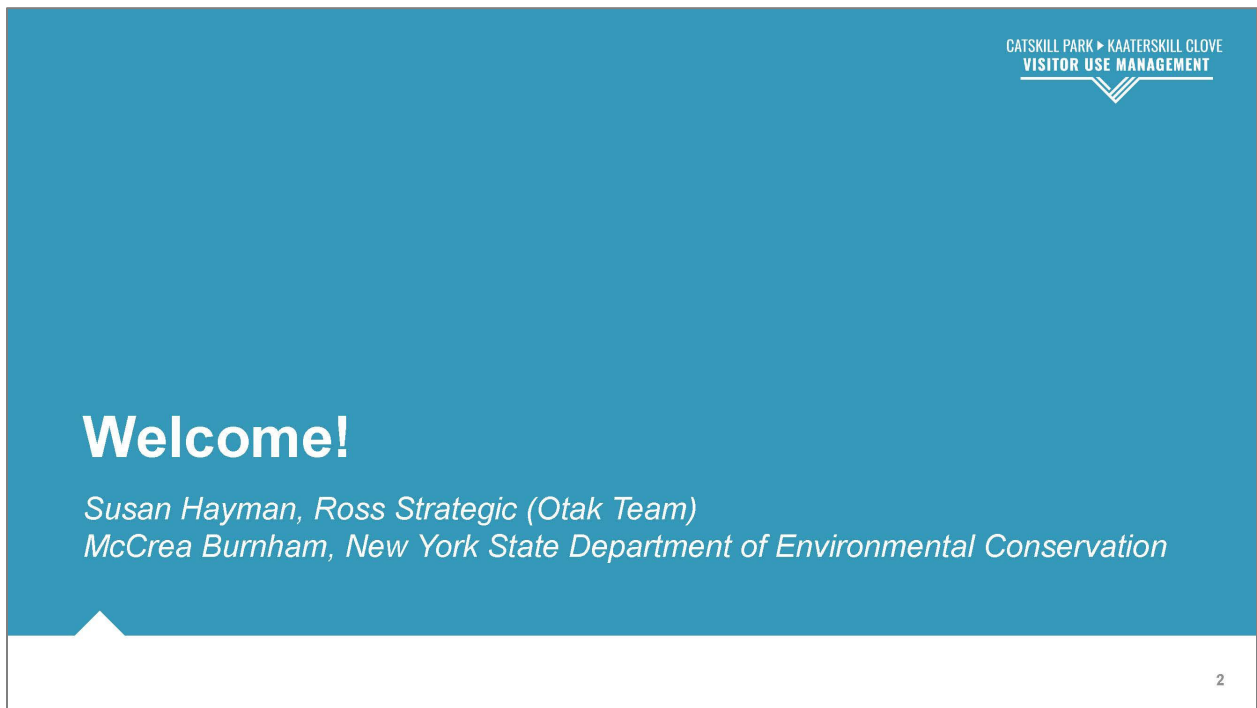


Public Meeting  
Kaaterskill Clove Visitor Use Management Project

May 10, 2023

CATSKILL PARK ▶ KAATERSKILL CLOVE  
VISITOR USE MANAGEMENT

This slide features a blue background with white topographic contour lines. The title and date are in black text on a white diagonal background. The logo is in the bottom right corner.



**Welcome!**

*Susan Hayman, Ross Strategic (Otak Team)*  
*McCrea Burnham, New York State Department of Environmental Conservation*

CATSKILL PARK ▶ KAATERSKILL CLOVE  
VISITOR USE MANAGEMENT

2

This slide has a solid blue background. The text is white. The logo is in the top right corner. A small white triangle is at the bottom left.



## Meeting Purpose

- Provide foundational information to increase public understanding of the project goals and timeline, and build a shared understanding of how the Visitor Use Management (VUM) Framework will be applied in the Kaaterskill Clove area.
- Share perspectives about current and desired future conditions for the Kaaterskill Clove area regarding amounts and types of visitor use, the quality and character of visitor experiences, and public safety considerations.

3

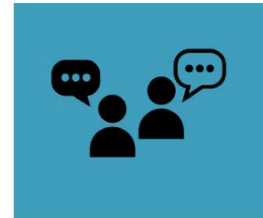
## Meeting Overview

Time	Topic/Speakers
5:30 pm	Gathering—Susan Hayman, Facilitator; McCrea Burnham, NYS DEC <ul style="list-style-type: none"> <li>• Welcome and purpose for the meeting</li> <li>• Meeting overview, introductions</li> </ul>
5:45 pm	Foundational Information <ul style="list-style-type: none"> <li>• Project overview—McCrea Burnham</li> <li>• Visitor use management framework overview—Abbie Larkin, Otak</li> <li>• Q&amp;A</li> </ul>
6:30 pm	Break
6:45 pm	Public Perspectives—Discussion Groups
8:10 pm	Reflections
8:25 pm	Closing—Susan, McCrea
8:30 pm	Adjourn

4

## For Tonight

1. Assume good intent from others
2. Be respectful and kind when speaking
3. Actively participate and share your perspectives
4. Actively listen -- make space for others to be heard
5. Follow guidance from the facilitator



5

## Foundational Information

*McCrea Burnham, NYS DEC*  
*Abbie Larkin, Otak*

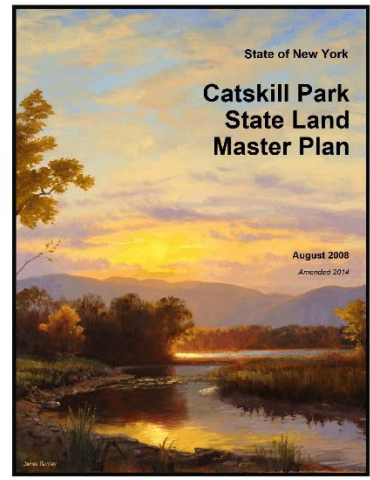
6

## Background

*"...an assessment of physical, biological, and social carrying capacity...with particular attention to portions of the area threatened by overuse in light of its resource limitations and its classification under the Master Plan."*

*"An evaluation and plan to implement the Limits of Acceptable Change model by **employing carrying capacity concepts** as a prescription of the desired resource and social conditions that should be maintained to minimum standards, regardless of use."*

- CPSLMP



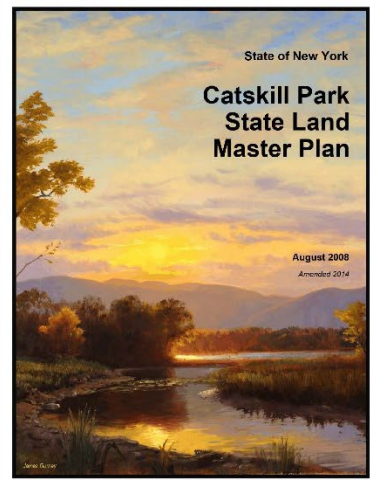
7

## Background

UMPs must include:

*"... an assessment of the physical, biological, and social carrying capacity of the area ..."*

- CPSLMP

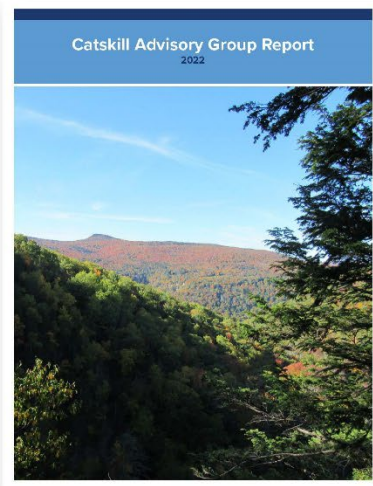


8

## Background

*“The state should move quickly to adopt the Federal Interagency Visitor Use Management Council’s **Visitor Use Management Framework (VUMF)** as its core management tool. VUMF utilizes robust data collection to implement management actions on public lands.”*

- Catskill Advisory Group Report, 2022

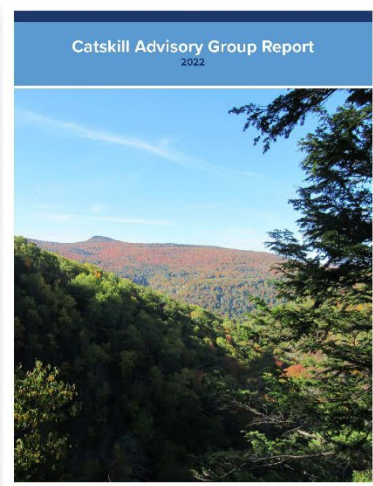


9

## Background

- *Identify areas that can accommodate high use or lesser volumes of use;*
- *Establish parking limits and carrying capacities for trails, waterfalls, swimming areas, and other locations;*
- *Identify the infrastructure that is necessary to accommodate visitor experience and volume of use; and*
- *Make management decisions that will prevent the degradation of natural resources.*

- Catskill Advisory Group Report, 2022



10

## Background

- 2021 High Peaks Advisory Group Final Report
- 2022 State Budget included line for "comprehensive planning"
- DEC Commissioner announced VUM projects in both ADKs and Catskills
- Request for Proposal (RFP)
- Contract award to Otak

11

## Project Purpose

*Implement the VUMF and conduct a visitor use management planning process, with a focus on experiential, social, and public safety elements of visitor use management and visitor capacities, to promote sustainable visitor use.*

12

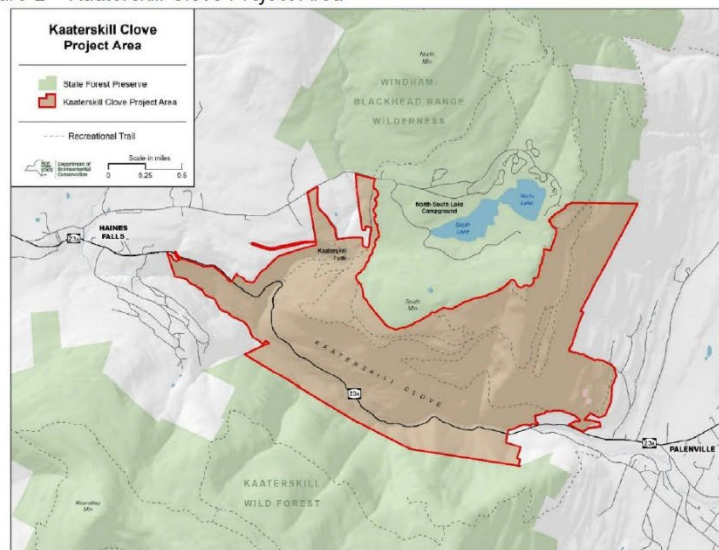
## Other Data Collection Efforts

- Physical condition monitoring for trails and tent sites
- Formerly Trail-less Peaks Condition Monitoring

13

## Kaaterskill Clove Study Area (Catskill Park)

Figure 2 – Kaaterskill Clove Project Area

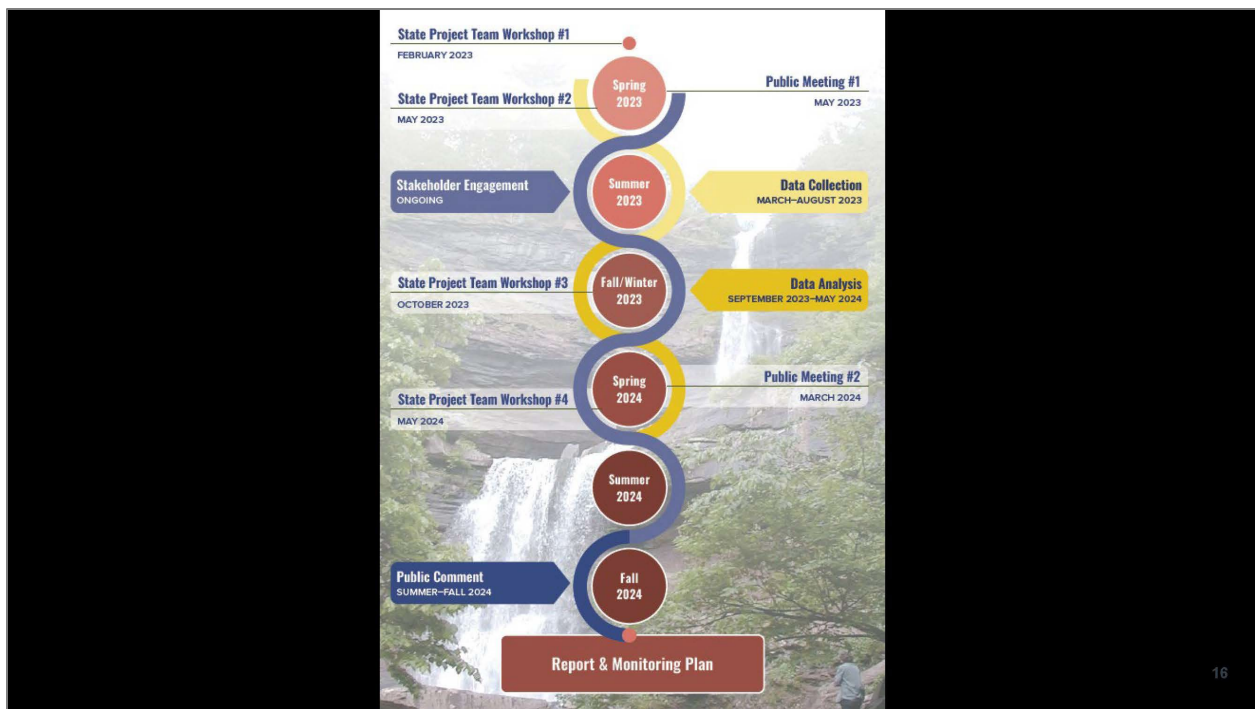


14

## State Project Team

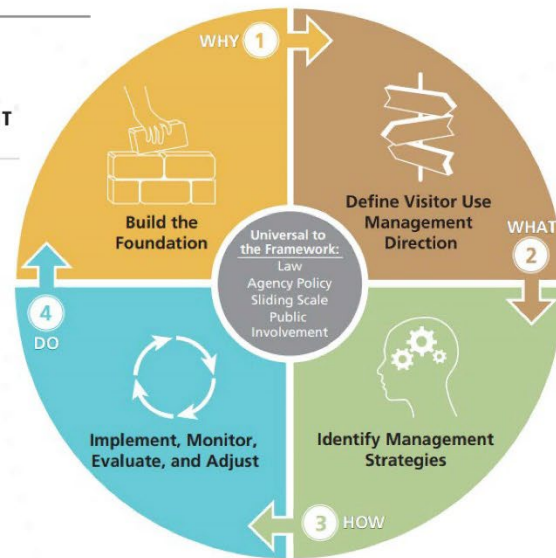
- Forestry / land management (Regional)
- Forest Rangers (Regional)
- Operations (Regional)
- Forest Preserve program administration (Albany)
- Adventure NY / Outdoor Recreation program (Albany)

15



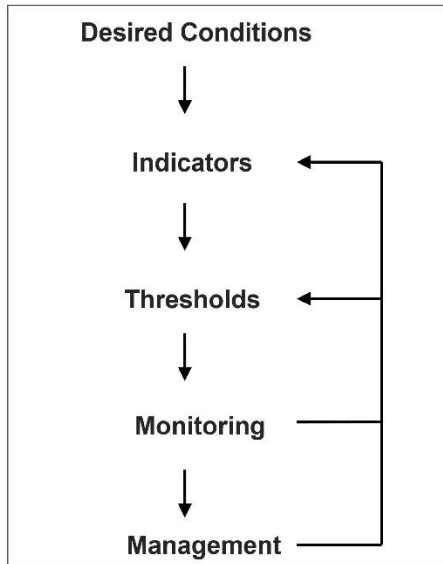
16

## Overview of the Visitor Use Management Framework



17

### Desired Conditions



18



**Ota's Visitor Use Management and Carrying Capacity Projects**

**CATSKILL PARK ▶ KAATERSKILL CLOVE  
VISITOR USE MANAGEMENT**

ACADIA NATIONAL PARK

SHENANDOAH NATIONAL PARK

INYO NATIONAL FOREST

ARCHES NATIONAL PARK

MOUNT RAINIER NATIONAL PARK

ZION NATIONAL PARK

**CATSKILL PARK ▶ KAATERSKILL CLOVE  
VISITOR USE MANAGEMENT**

# Questions?

# Public Perspectives

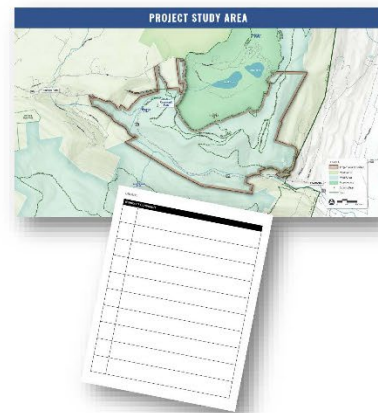
*Facilitated Discussion Groups*

21

## Discussion Group Process

Two Rounds: Current Conditions, Desired Future Conditions

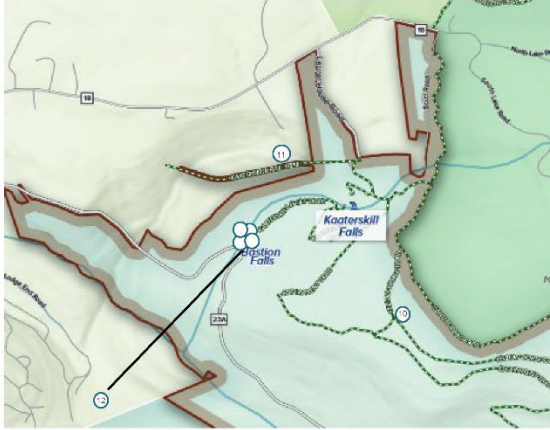
1. Self-select a discussion group (distribute from same organization)
2. Consider prompts in handout--reflect on those of greatest importance to you
3. Place numbered stickers where you'd like to add a comment
4. Add your **Group #** to your worksheet, add **sticker number** and **brief corresponding comments**
5. Facilitator reconvenes group to share comments and discuss
6. Hand in your worksheet to your facilitator before returning to the plenary seating



22

## Discussion Group Process (cont'd)

Two Rounds: Current Conditions, Desired Future Conditions



GROUP: A

Number	Comments
10	This is my comment about sticker #10...
11	This is my comment about sticker #11...
12	This is my comment about sticker #12...
	ETC.

23

## Reflections

24

# Next Steps

25



## Next Steps

- Meeting synthesis
- Website updates as information becomes available
- Summer data collection

26

## More Thoughts to Share?

Comments are welcome throughout the process and may be submitted in the following ways:

1. By email to: [vum-facilitators@rossstrategic.com](mailto:vum-facilitators@rossstrategic.com)
2. Through the project website at: <https://www.kaaterskillclovevum.com/>
3. No internet access? Send written comments to:

McCrea Burnham  
625 Broadway, 5th Floor  
Albany, NY 12233-4254

27

## Closing Remarks

*Susan Hayman  
McCrea Burnham*

28

Thank you for participating!

For more information, visit our project website:  
<https://www.kaaterskilleclovevum.com/>

CATSKILL PARK ► KAATERSKILL CLOVE  
VISITOR USE MANAGEMENT



## Appendix C: Discussion Group Instructions, Comment Card, and Project Area Map

### Participant Discussion Group Instructions

There will be **two discussion rounds** for meeting participants to respond to a series of prompts (see below).

**For each discussion round:**

1. Check out the map posted on the wall.
2. Read the Discussion Round prompts (see below). Reflect on those of greatest importance to you.
3. When it's time, you will have several minutes to place numbered stickers to the map where you'd like to add a comment.
  - ✓ If an area of the map becomes too congested with stickers, place your numbered sticker on an outer area of the map and use a marker to draw a connector line from your numbered sticker to the area relevant to your comment.
  - ✓ We'll have a designated area on the map to place numbered stickers not associated with a specific location on the map.
4. **Please briefly note your comments for each corresponding number** on a card provided by the facilitator (you may enter multiple comments on one card).
5. When the facilitator invites you share one of your comments, please state your sticker number and comment. Be as specific as you can about the experience, location, activity, etc. you are referencing.
6. The group will continue sharing as time allows.
7. The facilitator will collect the Round 1 (white) and Round 2 (blue) cards.

### Discussion Round 1 (35 min)

**Topic: Current conditions** (with respect to amounts and types of visitor use, quality, and character of visitor experiences, and public safety).

**Prompts:**

- a. What is *working well* in the project area that contributes to high quality visitor experiences?
- b. What are *current barriers* to high quality visitor experiences, and for whom?
- c. What are the *current positive impacts* of visitor use to the landscape and local communities?
- d. What are the *current negative impacts* of visitor use to the landscape and local communities?

### Discussion Round 2 (35 min)

**Topic: Desired future conditions** (with respect to amounts and types of visitor use, quality, and character of visitor experiences, and public safety).

**Prompts:**

- a. What would you like to experience when you visit this area?
- b. How should people feel and what should they take away from their experiences in this area?
- c. What types of opportunities should the public have to experience this area?
- d. What benefits should people and local communities experience from recreation in this area?

**GROUP:**

Number	Comments



# PROJECT STUDY AREA

